

GENERAL PUMP & EQUIPMENT CO., INC.

MANUFACTURING QUALITY HYDROSTATIC TESTING EQUIPMENT FOR CONTRACTORS AND INDUSTRY SINCE 1969
3276 BRUENING AVENUE SW
CANTON, OHIO 44706
PHONE 330-455-2100
TOLL FREE 800-594-5178
EMAIL gentest@bright.net

MODEL 6334-550 AND 6334-550-1 HYDRO-TEST PARTS LIST

<u>PART NO.</u>	<u>DESCRIPTION</u>
B11	Exterior Case
B13	TEFC Motor 3/4 HP Pre-wired
B13-1	TEFC Motor 1 HP (550-1 only) Pre-wired
HT2X	B14 Replacement Pump
HT3X	B14-1 Replacement Pump (550-1 only)
HT2XR,HT3XR	B15 Rebuilt Pump (Old Pump exchange)
B16	Base Plate w/ Rubber Feet
B17	Rubber Vibration Isolators
B18	Handle Grip
B19	Heavy Duty Toggle Switch
B19-SG	Heavy Duty Toggle Switch w/Safety Guard
B20	Power Supply Cord
B20-1	Power Supply Cord (550-1 only)
B21	Rubber Feet
B22	Decal Pack
B20KT	Switch Kit (Includes switch, switch plate, cord w/ connectors, cord grip and switch guard)
B20KT-1	Switch kit for 550-1 only
B23	Rubber Grommets
B24	Bumper Block (Use under pump torque arm)
B25	Switch Guard
B26	Cord Grip

PUMP HEAD

P101KT	Piston Repair Kit
P120KT	Seal, Guide and O-ring Kit (Includes all high pressure seals, O-rings & 2 Carbon Guides)
P130KT	Check Valve Kit (Includes 4 complete Valves w/ O-Rings)
P140KT	Cylinder Kit (Includes 2 complete cylinders, piston repair kit, 2 carbon guides)

GENERAL PUMP & EQUIPMENT CO., INC.

MANUFACTURING QUALITY HYDROSTATIC TESTING EQUIPMENT FOR CONTRACTORS AND INDUSTRY SINCE 1969
3276 BRUENING AVENUE SW
CANTON, OHIO 44706
PHONE 330-455-2100
TOLL FREE 800-594-5178
EMAIL gentest@bright.net

MODEL 6334-550 AND 6334-550-1 HYDRO-TEST PARTS LIST

<u>PART NO.</u>	<u>DESCRIPTION</u>
P102	Piston Cup Spreader
P103	Piston Cup Retainer
P104	Carbon Piston Guide
P105	Connecting Rod
P107	Torque Arm (HT2X, HT3X)
P108	Cylinder Head 3/8 bolt (HT2X, HT3X)
P109	O-Ring Cylinder Head
P110	Cylinder
P111	O-ring, cylinder sleeve
P112	Check Valve
P113A	Pump Body (3/8" bolt)
P116	Main Bearing
P117	Retainer Ring, Shaft Bearing
P118	Retainer Ring, Housing

REPAIR TOOLS ** ALL TOOLS SPECIAL ORDER

Tool A	Valve Cage Extractor
Tool C	Sleeve Removal Rod
Tool D	Valve Seat Extractor
Tool E	Pry Bar
Tool Set	Includes All Tools A-E

INLET PIPING ** INLET MADE WITH ALL STAINLESS AND BRASS FITTINGS

I2201	1/2 x 2 SS Nipple
I2202	90 Deg. SS Ell
I2203	1/2" SS Tee
I2204	1/2 x 4 1/2 SS Nipple
I2206	Garden Hose Swivel Ftg. (Brass)
I2207	Relief Hose w/ Fittings
I2208	Cone Strainer
I2209	1/2" Y-Strainer w/ 1/2 x CL SS Nipple
I2220	Inlet Sub-Assembly, Complete. <u>Does not include I2209 1/2"</u> Y-Strainer.
I2222	Inlet Sub-Assembly, Complete with I2209 1/2" Y-Strainer

GENERAL PUMP & EQUIPMENT CO., INC.

MANUFACTURING QUALITY HYDROSTATIC TESTING EQUIPMENT FOR CONTRACTORS AND INDUSTRY SINCE 1969
3276 BRUENING AVENUE SW
CANTON, OHIO 44706
PHONE 330-455-2100
TOLL FREE 800-594-5178
EMAIL gentest@bright.net

MODEL 6334-550 AND 6334-550-1 HYDRO-TEST PARTS LIST

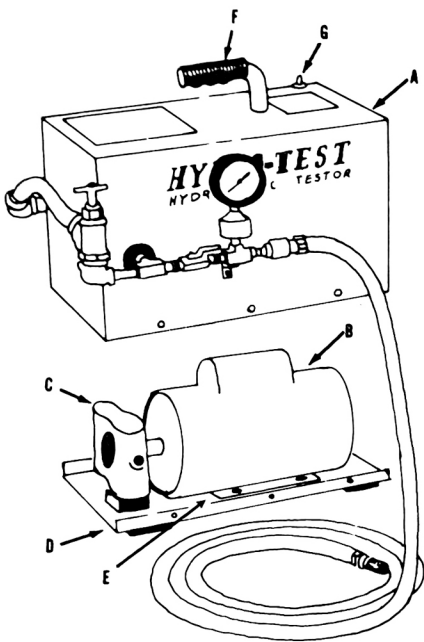
PART NO. **DESCRIPTION**

OUTLET PIPING

O2102-550	Brass Adpt. ½ x ½ (Relief Valve)
O2103-550	Brass Relief Valve
O2104-550	Brass Ell ½ x ¼ High Pressure
O2106	Stainless Nipple ¼ x 1 ½ Use for O2105,O2108,O2111
O2107	Extruded Brass Tee, High Pressure
O2109-550	Ball Valve
O2110	High Pressure Brass Check Valve.
O2112	Gage 0-600 psi., Glycerin Filled
O2113	Brass Adpt. ½ x ¼
O2120-550	Complete Outlet Sub-Assy. (Includes all items O2102-O2113 assembled. Does not include outlet hose.)
O2114	½" Outlet Hose w/ Ends 10'
O2124	½" Outlet Hose w/ Ends 15'
O2134	½" Outlet Hose w/ Ends 20'
O2115	½ x ½ Brass Adpt. (For Hose)
O2118	Outlet Support Bracket

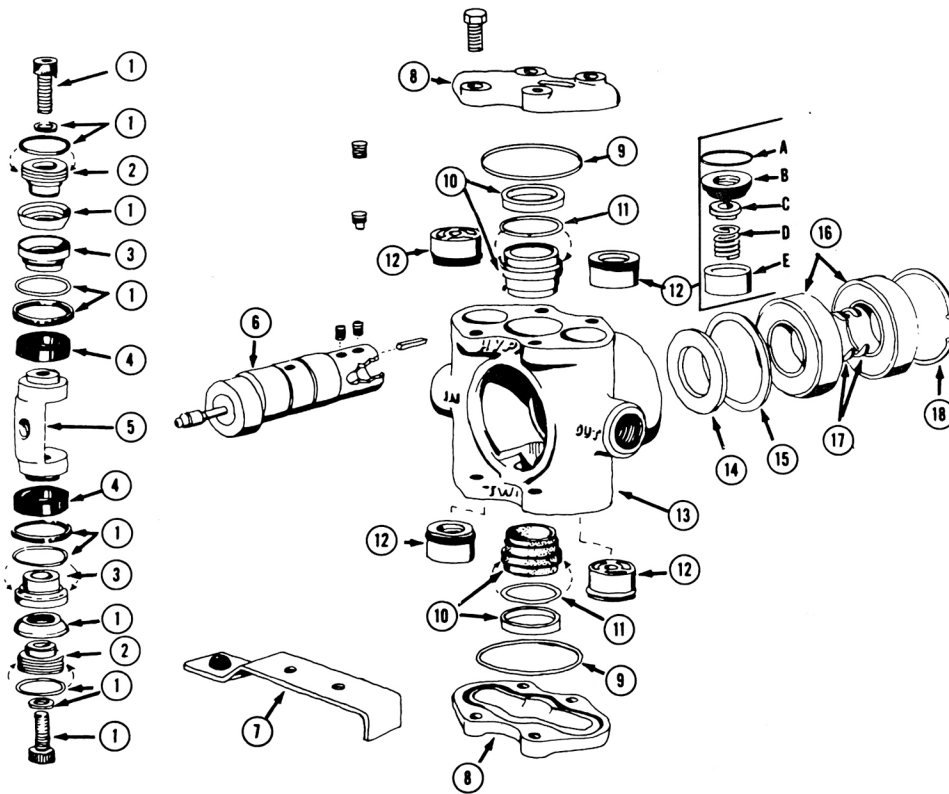
MODEL 6334, 6334-350, 6334-550 and 6334-550-1 PARTS LIST

MAJOR PARTS



Ref. No.	Description	Part No.
A	Exterior Case (Steel)	B11
B	Motor, TEFC 1/2 HP (6334)	B12
B	Motor, TEFC 3/4 HP (6334-350, 550)	B13
B	Motor, TEFC 1 HP (6334-550-1)	B13-1
C	Pump, HT3X (6334, 350, 550-1)	B14 HT3X
C	Pump, HT2X (6335-550)	B14 HT2X
C	Rebuilt Pump (Exchange) See parts price sheet	
D	Base Plate with Rubber Feet	B16
E	Rubber Vibration Insulators (Motor)	B17
F	Handle Grip	B18
G	Heavy Duty Toggle Switch	B19

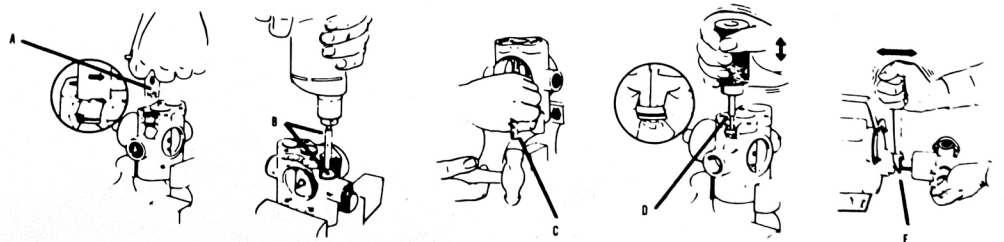
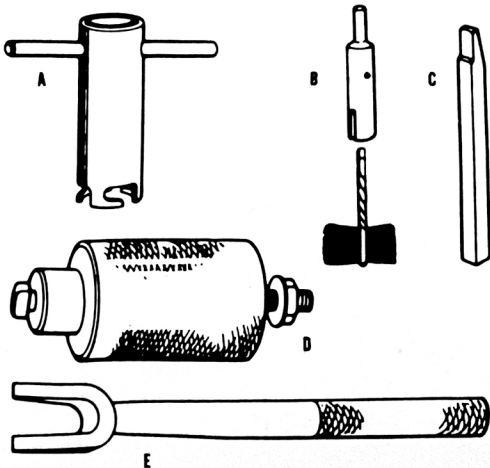
PUMP



Ref. No.	Description	Part No.
1	Piston Repair Kit	P101
2	Piston Cup Spreader	P102
3	Piston Cup Retainer	P103
4	Piston Guide	P104
5	Connecting Rod	P105
6	Crankshaft	P106
7	Torque Arm	P107
8	Cylinder Head	P108
9	O-Ring Cylinder Head	P109
10	Cylinder Sleeve	P110
11	O-Ring (Cylinder Sleeve)	P111
12	Check Valve	P112
13	Pump Body	P113
14	Sleeve Washer	P114
15	Bearing Spacer	P115
16	Main Bearing	P116
17	Bearing Retainer Ring	P117
18	Housing Retainer Ring	P118

REPAIR TOOLS for HYDRO-TEST 6334 PISTON PUMPS

A - Valve Cage Extractor
B - Brush & Holder
C - Sleeve Removal Rod
D - Valve Seat Extractor
E - Pry Bar
Complete Set



INLET PIPING

Ref. No.	Description	Part No.
14-21	Inlet Sub Assy. (Assembled)	I2220
14	Nipple (Galv.)	I2201
15	90° Ell (Galv.)	I2202
16	Tee (Galv.)	I2203
17	Nipple (Galv.)	I2204
19	Hose Swivel Fitting (Brass)	I2206
20	Relief Hose with Fittings	I2207

HYDRO-TEST MODELS:

- 6334 (250 psi. max.)
- 6334-350 (350 psi. max.)
- 6334-550 (500 psi. max.)
- 6334-550-1 (500 psi. max.)

OUTLET PIPING

MODELS 6334 & 6334-350

Ref. No.	Description	Part No.
2	Adapter (Brass)	02102
3	Bronze Relief Valve	02103
4	Brass Ell	02104
5	Nipple (Stainless)	02105
6	Nipple (Stainless)	02106
7	Tee (Extruded Brass)	02107
8A	High Pressure Check Valve (Brass)	02110
9	Ball Valve (Brass)	02109
10	Adapter (Brass)	02115
11	0-600 psi. gage (Glycerine Filled)	02112
12	Adapter (Brass)	02113
13	1/2" High Pressure Hose w/Ends (For lengths see parts price sheet)	02114
2-12	Outlet Sub-Assy (Assembled)	02120

MODELS 6334-550 & 6334-550-1

Ref. No.	Description	Part No.
2	Adapter (Brass)	02102-550
3	Bronze Relief Valve	02103-550
4	Brass Ell	02104-550
5	Nipple (Stainless)	02105
6	Nipple (Stainless)	02106
7	Tee (Extruded Brass)	02107
8A	High Pressure Check Valve (Brass)	02110
9	Ball Valve (Brass)	02109-550
10	Adapter (Brass)	02115
11	0-600 psi. gage (Glycerine Filled)	02112
12	Adapter (Brass)	02113
13	1/2" High Pressure Hose w/Ends (For lengths see parts price sheet)	02114
2-12	Outlet Sub-Assy (Assembled)	02120-550

